

MOUNTING SYSTEMS



PROJECT
COMMERCIAL
INDUSTRY

krannich



K2 SYSTEMS

www.k2-systems.com



As a mounting system manufacturer for solar technology, K2 Systems has been developing innovative system solutions for the international photovoltaic industry at its German headquarters since 2004. The proven support systems for use on pitched and flat roofs or for special projects are particularly convincing due to their high quality and functionality. The many years of experience and the service-oriented way of acting as well as the personal contact make K2 Systems a sympathetic and reliable partner.



Facade systems

FacadeRail

- + PV mounting system for fixed facades
- + Curtain walling
- + Facade insulation

CarrierRail

- + Building facades with sandwich panels
- + Approved by the building authorities for Fischer Profil FischerTHERMpanels
- + Applicable with thread-forming, self-sealing screws and InsertionRail

MultiRail

- + Trapezoidal sheet metal or corrugated sheet metal
- + Efficient and easy-to-mount wall fastener



Trapezoidal sheet metal

SpeedRail

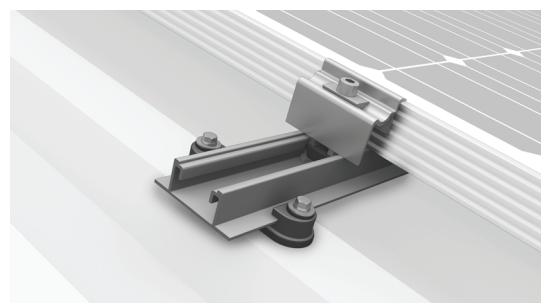
- + All-rounder with only 4 installation steps – also suitable for high loads
- + Floating and with controlled thermal linear expansion

MiniRail

- + Short rail system with universal module alignment
- + Optimized for storage and transport thanks to fewer components

MultiRail

- + Roof connection and mounting rail in one component
- + Available as short rail or flexible component in different lengths





Standing seam metal roof

SingleRail & SolidRail

- + Penetration-free by means of different seam clamps for standing and round seams

Corrugated sheet metal

MultiRail CSM

- + MultiRail CSM is a roof connected mounting rail in one component for corrugated sheet of 22 – 45 mm
- + SolidRail with solar panel anchor bolt

Corrugated fiber cement and sandwich-panels

- + Hanger bolts or solar fasteners with SingleRail, SolidRail or insertion system

Flat roof

Dome 6 Xpress

- + Quick and easy installation with pre-assembled kits, single sided 10 or 15 elevated available

Dome 6 Classic

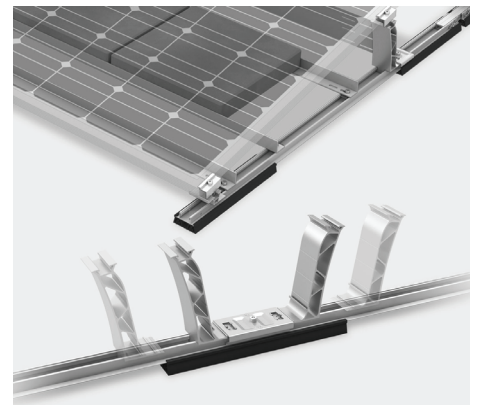
- + High flexibility for roofs with many obstacles

Dome 6 Classic LS

- + Installation of large modules and with high wind / snow loads

Dome Zero System

- + Roof-parallel mounting system for flat roofs with Dome 6 components
- + Suitable for roof pitches up to 10° with typical flat roof coverings
- + Very flat installation height – concealment behind a parapet is possible



Free planning software K2 Base

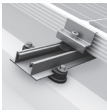
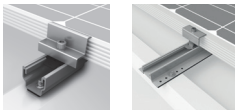

- + Easy planning of the mounting system in 5 steps
- + Automatic calculation of snow and wind loads at the project site
- + Detailed project reports incl. structural analysis report, assembly and ballasting plan as well as article list
- + Interface to common inverter manufacturers without multiple entry of project data
- + One user account covers all digital services: K2 CheckApp in the quotation phase, K2 Base in the planning phase and K2 DocuApp in the documentation phase

Digital project documentation with the K2 DocuApp

- + End-to-end automation of project documentation for PV installation
- + Seamless transfer from K2 Base
- + Documentation of all processes clearly arranged with a single app – without paperwork!
- + Acceptance of the PV system from the end customer and signature directly on the smartphone
- + All data required for the market master data register simply summarized for the customer

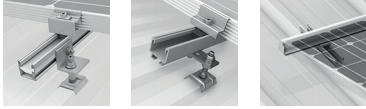



Trapezoidal roof (no isolated trapezoidal roof)

Mounting systems	 BasicRail	 MultiRail, MiniRail 2.0		 MiniFive (based on MiniRail 2.0)
System structure / Rail concept	roof parallel/ single or double layered	roof parallel/ short rail system		5° elevation / short rail system
Rail type	BasicRail	MultiRail	MiniRail 2.0	MiniRail 2.0
Rail length (m)	2,5 4,80 5,95	0.10	0.25	0.40
Roof fixing	with basic clip and thread-forming drill screw	thread-forming drilling screw		thread-forming drilling screw
Fixing points	metal roofing	metal roofing		metal roofing
Module clamps	for 30 - 42 mm frame height in black or silver			
Notes	because of the strength of the drilling screw in the K2-BASE planning, pay attention to the material and thickness of the metal sheet			




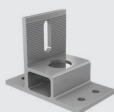
Trapezoidal roof (no isolated trapezoidal roof)

Mounting systems	 <p>Solar fastener with calotte and SingleRail, SolidRail, Insertion System</p>		 <p>Dome 6.10 on trapeze</p>
System structure / Rail concept	<p>roof parallel/ single or double layer with continuous rails</p>		<p>10° flat roof system with roof fixing</p>
Rail type	<p>SingleRail</p>	<p>SolidRail</p>	<p>BasicRail</p>
Rail length (m)	<p>2,50 3,65 4,80 5,95</p>		<p>2.50 4.80 5.95</p>
Roof fixing	<p>solar fastener with calotte (wood / steel)</p>		<p>with speed clip and thread-forming drilling screw</p>
Fixing points	<p>roof substructure</p>		<p>metal roofing</p>
Module clamps	<p>for 30 - 42 mm frame height in black or silver</p>		<p>for 30 - 50 mm frame height in black or silver</p>
Notes	<p>ensure sufficient beam/material thickness of the roof substructure</p>		<p>cannot be completely planned in K2-BASE (contact Krannich Support)</p>




Corrugated fibre cement panels (Eternit)

Bitumen roof

Mounting systems				
	Hanger bolt with SingleRail, SolidRail, Insertion System			Splice Foot
System structure / Rail concept	roof parallel / single or double layer with continuous rails		roof parallel / Insertion System (always double layer)	Continuous rails with direct connection to the roof cladding by means of Splice Foot
Rail type	SingleRail	SolidRail	SolidRail + InsertionRail	SingleRail
Rail length (m)	2,50 3,65 4,80 5,95			2,50 3,65 4,80 5,95
Roof fixing	hanger bolt (wood) or solar fastener (wood + steel)			Wood screws with sealing washer
Fixing points	roof substructure			Roof substructure / form- work
Module clamps	for 30 - 42 mm frame height in black or silver	InsertionRail black or silver, for 35 and 40 mm frame height		for 30 - 42 mm frame height in black or silver
Notes	ensure sufficient beam thickness of the roof substructure	mounting system only possible with double-layer		Only roof-parallel systems with SingleRail possible



Flat roof

Mounting systems	<div></div> <div>Dome 6 (roof parallel, South + E/W)</div>				TiltUp Vento
System structure	low ballast, aerodynamic flat roof system without roof penetration for bitumen, membrane, gravel and green roofs				universal elevation on concrete foundation
System	Dome 6.0	S-Dome 6.10	S-Dome 6.15	D-Dome 6.10	TiltUp Vento
Versions	-	Xpress (pre-assembled) Classic (individual components) Classic LS (module clamping at the 1/4 points)			Modules upright Modules crosswise (1-/2-row)
Alignment	Roof parallel	South		East-West	South
"Continuous rail concept"	yes				no
Module angle	0°	10°	15°	10°	20° / 25° / 30°
Module length (mm)	1448 to 2390				up to 2293
Module width (mm)	950 to 1170				depending on ar- rangement up to 1135
Notes	very low-ballast system, pre-assembled components, can be used for wide modules				universal system with flexible inclination and few components